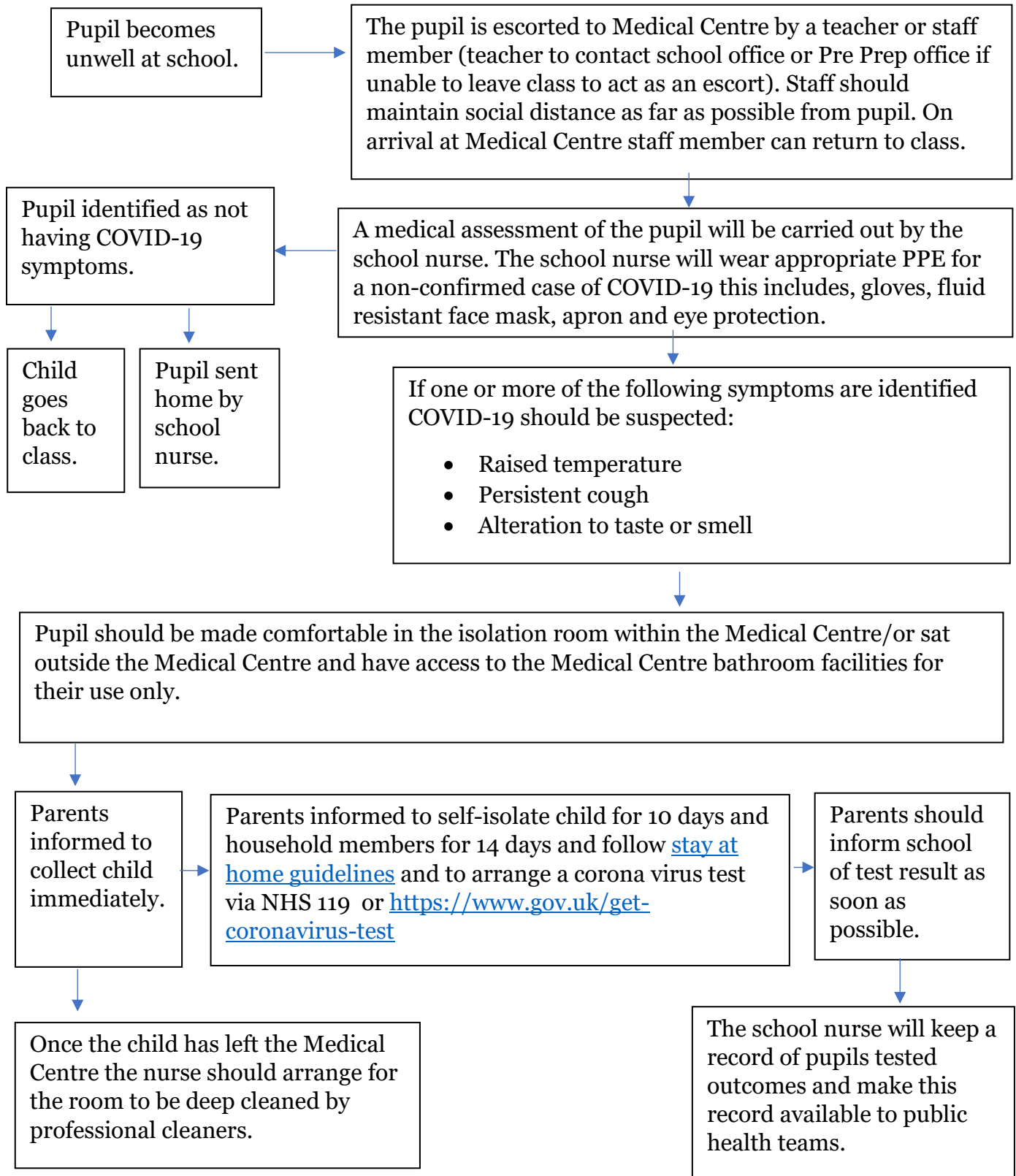
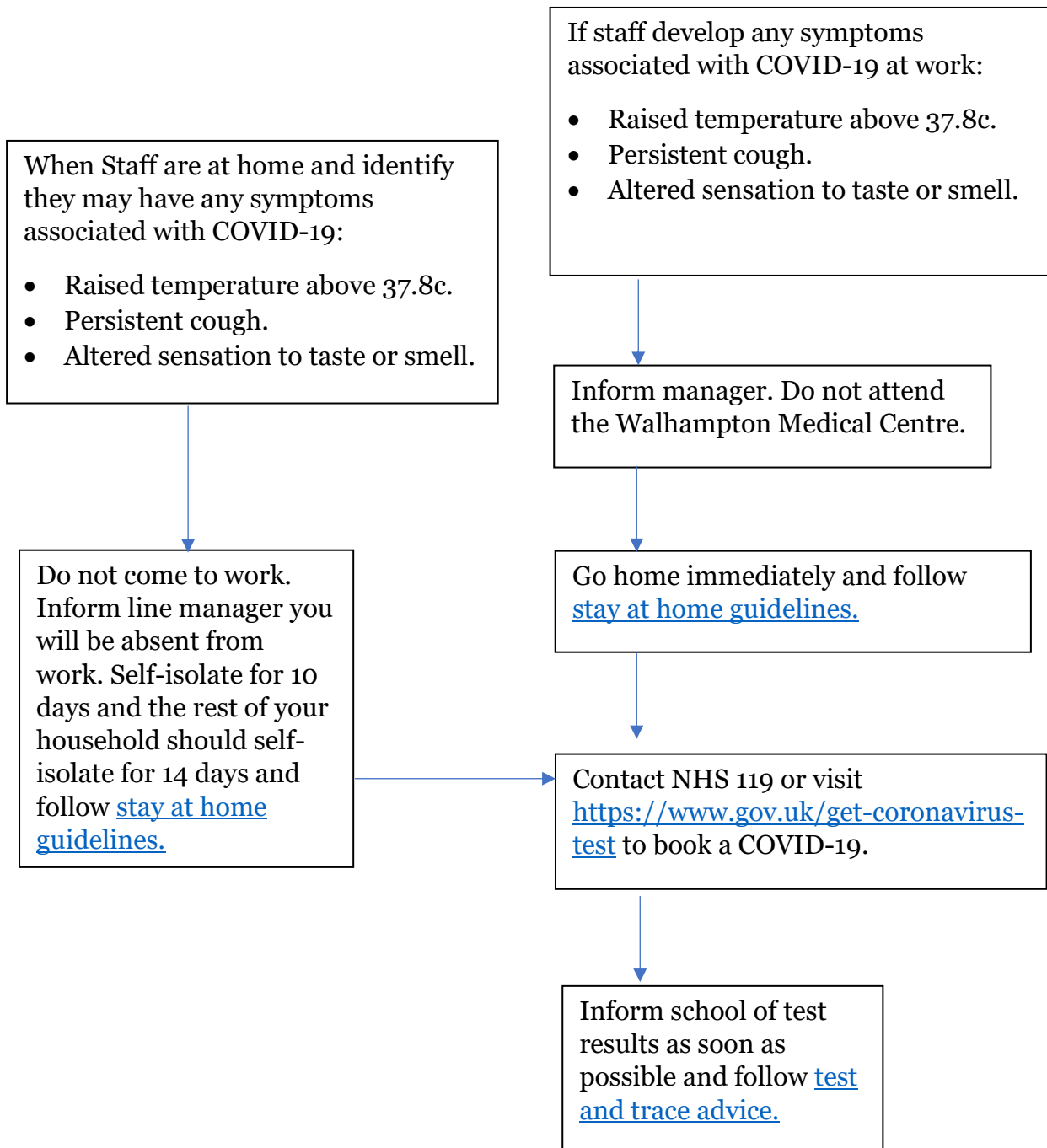


## COVID-19 Flowchart

# What to do when a child becomes unwell at school



# What to do when a staff member develops symptoms of COVID-19



## **PLEASE NOTE:**

**Staff should only attend the Medical Centre in a first aid emergency.**

**Medication will not be issued to staff for minor illnesses. All staff must provide their own pain relief medication and store safely.**

# Outcome of COVID-19 Test

