







*"Happy hearts and happy faces, happy play
in grassy places, that was how, in ancient ages,
children grew to kings and sages."*

ROBERT LOUIS STEVENSON



COME & VISIT THIS

REMARKABLE SCHOOL

Welcome to the Walhampton prospectus. We hope it gives you a valuable insight to who and what we are as a school and a real sense of the purpose and joy of a Walhampton education.

As parents, if you're anything like me, you want some simple things for your child. You want them to succeed academically, grow in self-confidence, develop their talents and discover new interests. You want them to stay younger for longer - a precious thing in this day and age - but also to be culturally aware and compassionate members of society, so they are prepared not only for senior school but also their future lives in the world of tomorrow. Above all, you want them to be happy and fulfilled. At Walhampton, we want the same, for each and every one of our children.

We are fortunate to have a stunning setting on the south coast of England, surrounded by the ancient woodlands of the New

Forest with views over the Solent to the Isle of Wight. With over 100 acres and extensive facilities, including a dedicated outdoor learning classroom and riding stables, a Walhampton education is enjoyed as much outside in our stunning natural surroundings as it is in the classroom.

But Walhampton is much better defined by our people; above all, we pride ourselves on being a close and nurturing community where all are cared for and all can thrive.

Choosing the right school for your child is not easy. We do not take lightly the trust we are asking parents to place in us. I hope you find what you are looking for at Walhampton. I am confident you will.

JONNY TIMMS *Head*



WELCOME TO
WALHAMPTON

An independent day and boarding school for boys and girls aged 2-13, Walhampton lies in ancient woodland on the southern edge of the New Forest, on the coast near Lymington in Hampshire. A nurturing environment where children develop a genuine love of learning, our mission is to:

Promote the importance of moral, spiritual and social values, inspired by the school's Christian ethos.

...

Be a genuinely dynamic school where teaching is exemplary and children develop both the discipline of study and the joy of learning.

...

Develop each child's unique academic, creative and sporting potential through a broad and balanced education.

...

Be a distinctly happy school to which children and adults feel a deep loyalty; a place in which children can laugh, feel safe and enjoy being children.

...

Inspire a love of nature and the outdoors.

...

Be a school that is both forward thinking and outward looking, building strong links with parents and the local community, and celebrating cultures around the world.

...

Develop strength of character so every child leaves us as a confident, capable, compassionate and independent minded young person.





INSPIRED

TEACHING & LEARNING

*A broad and balanced education founded
on academic excellence: teaching the whole child.*



Our children achieve consistently impressive academic results, taking their learning to the next level as they prepare for the country's leading secondary schools. It is especially encouraging when the quality of our teaching is recognised externally. The Independent Schools Inspectorate has said:

*"Pupils' achievements and their learning, attitudes and skills
are excellent...an exciting and dynamic school in which children
acquire a genuine thirst for knowledge and a love of learning.
Pupils are extremely well prepared for their future lives."*

— MOST RECENT ISI REPORT —

We pride ourselves in having small classes. As you would expect, we prepare our boys and girls for 13+ Common Entrance and scholarships to senior independent schools, including Eton College, Wycombe Abbey, Winchester College, Marlborough, Radley, Canford, Bryanston, Claysmore and King Edward VI.

Importantly, our location and facilities mean we can offer a far broader and more balanced education than many other schools. Education isn't only about formal exams: we believe in taking children beyond the classroom to our kitchen garden, fields, lakes and woodland to bring Maths, English, Science and History to life - and making sure sports, music and the arts flourish alongside other academic disciplines.



"The joy of learning is as indispensable in study as breathing is in running."

SIMONE WEIL







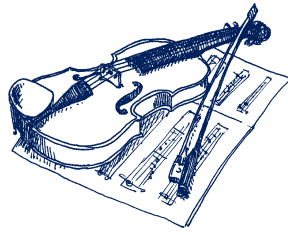
Our highly qualified teachers inspire and bring learning to life: their multi-sensory approach complements our broad curriculum, developing meaningful cross-curricular links wherever possible.

For example, in English we encourage children to exercise their imagination and express themselves via the written word, debates and visual media.

Our Maths department works on the basis that meaningful learning comes from understanding how and why mathematical principles relate to everyday life and experiences.

Inspirational lessons lead into group work, peer discussion and kinaesthetic tasks - alongside essential rote learning. Bringing History alive includes re-enactments of battles: Hastings with horses, Agincourt in the woods and Trafalgar on the lake.

Our Learning Support Unit is also on hand to provide bespoke support, offering additional help to those who need it, and challenging gifted children. Our aim is to nurture, instill confidence and encourage enthusiasm. We're also very proud of our Library, a beautiful room with views across to the Isle of Wight. Pupils use the library resources for private work and study, or just curl-up on a beanbag and enjoy a good read.



FREEDOM TO CREATE

In music, drama and art, every child has opportunities to create and perform.

Walhampton is a hive of creativity. Our focus is to help each child to find their artistic ability within. We then ensure they have the environment and encouragement to express their creativity: in writing, music, singing, drama and the visual arts. This includes many opportunities to exhibit work and perform in front of an audience.

The school delights in a number of performances in our purpose-built Performing Arts Centre. From the unforgettable Pre-Prep Nativity to full-scale productions by the Prep juniors and seniors, the children always have their audience spellbound. Each year, over 60 children further their passion for drama and musical theatre by taking LAMDA examinations, with the majority achieving Merit or Distinction.

*“Every child is an artist.
The problem is how to remain an
artist once we grow up.”*

PABLO PICASSO







In Music, children across all years are introduced to theory and composition whilst developing a broad knowledge of classical, modern and world music. Musical talents are developed through fun, practical and innovative lessons. With six practice rooms, two teaching rooms and a theatre, we offer the latest technology and specialist tuition. A varied 'menu' of activities includes choirs, orchestra and our pop bands 'The Stags' and 'The Does', alongside brass, string and woodwind groups. Our extensive and well equipped Art, Pottery and DT departments are equally dynamic, providing all children with opportunities to explore creativity across the visual arts.

A unique country school, Walhampton is about big vistas and broad horizons. Our children are inspired by the people who teach them and by the landscape that surrounds them.

A TR

REMAR

SETT

"In wilderness I sens

CHARLES A.



RULY —————
RKABLE
TING —————

se the miracle of life."

LINDBERGH

Lawns, lakes and woodland, magnificent views
of the Isle of Wight and superb facilities for
academic studies alongside outdoor activities
like sailing, riding and beekeeping.





OUR SCHOOL COMMUNITY

Teaching values and building strong bonds.



Walhampton is a supportive community with a genuine focus on pastoral care: a country school where children have the space, support and encouragement to flourish. For example, our House and Patrol systems encourage older children to be aware of and care for children in lower years. It's normal to see children of different ages mixing happily together, particularly for extra-curricular activities. Indeed, you can sense an atmosphere of relaxed informality across the school, with an easy rapport between staff and children - but all within the context of respect for school rules and respect for each other.

Importantly, our tried-and-tested Tutor system means that every child has an adult they can look to and trust. As they progress through the school, a child can bring their cares, concerns or questions to the understanding ear of their own Tutor.

Our Christian ethos underpins every aspect of school life in a gentle but all-encompassing way. Christianity has been central to our school's history and will continue to be so. It means we place considerable emphasis on the core values of kindness, respect and responsibility. We want to help all our children develop a strong moral compass for life.



"It takes a whole village to raise a child."

AFRICAN PROVERB





*"The more that you learn,
the more places you'll go."*

DR. SEUSS



THE BEST START **PRE- PREP**

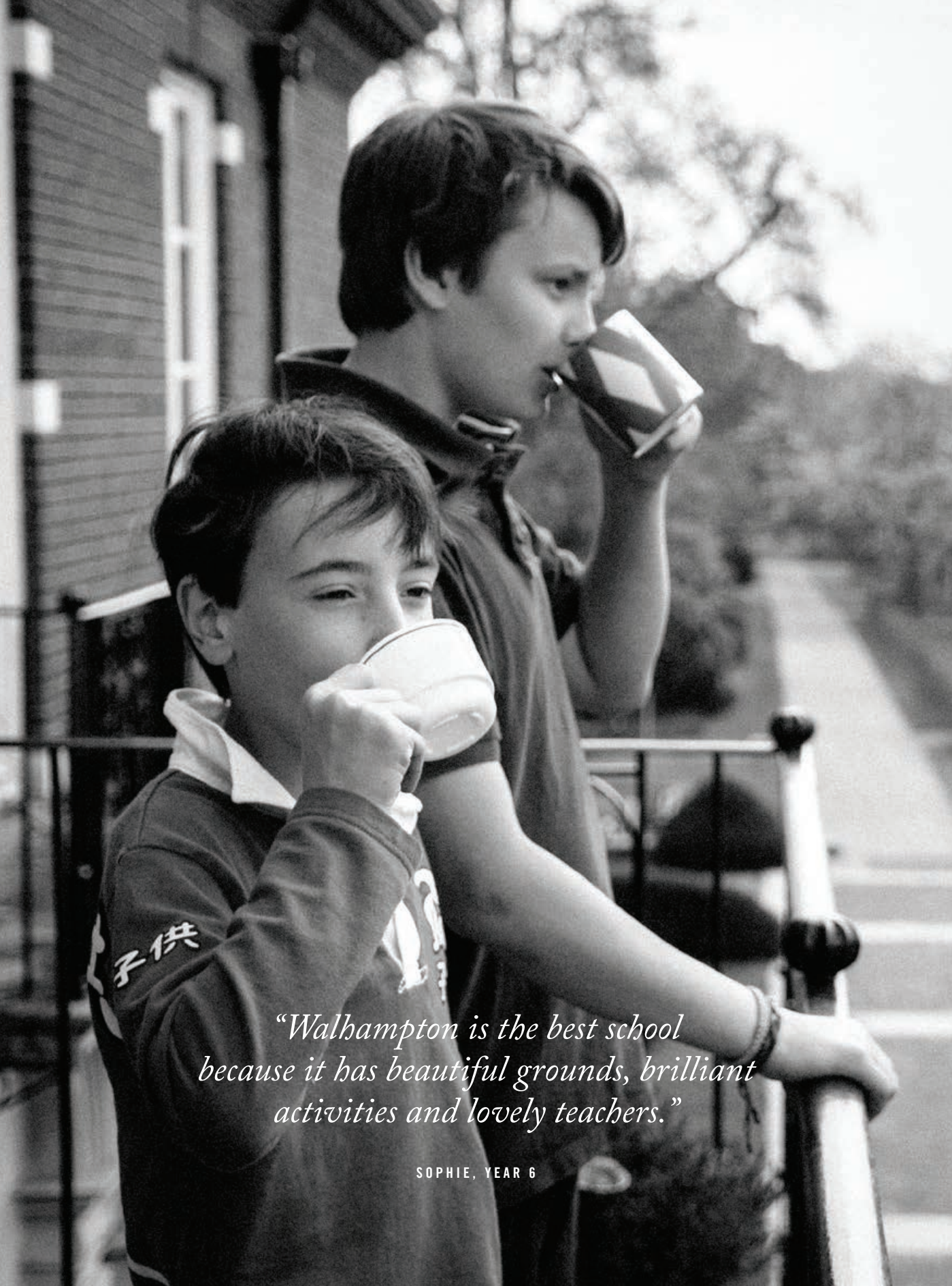
From their earliest years we celebrate 'the whole child'.

It is a privilege to work with children in their precious early years: to help them find their way, make friends and begin their educational journey. We start with the child, not the curriculum.

Walhampton's Pre-Prep and Nursery is a happy, big hearted and productive place where children can develop the building blocks for life and learning, with the help of caring staff who understand their individual needs. Our welcoming classrooms provide outstanding facilities that extend outside. It is a fun and educationally stimulating environment for children to start exploring their world through engaging lessons alongside play, music, drama and sport.

A genuinely nurturing school, we focus on giving each child exceptional opportunities for learning and personal development - and to help make the transition to 'big school' that much easier.





*"Walhampton is the best school
because it has beautiful grounds, brilliant
activities and lovely teachers."*

SOPHIE, YEAR 6



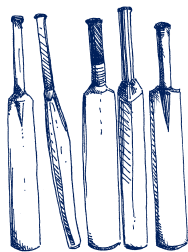
HOME COMFORTS **BOARDING**

Friendly 'home from home' boarding.

Walhampton is firmly rooted in a family approach, with day children completely integrated with our full-time, weekly and flexi-boarders - all of whom thrive within our 'home from home' environment. We work hard to provide a caring atmosphere that makes being away easier. Our comfortable and spacious shared bedrooms offer stunning views across the Solent.

A number of staff and their families live on the premises, including our house parents who ensure boarding is flourishing, caring and fun. They make sure all boarders are supported at all times. During the week, we ensure a healthy balance between work, rest and play, and keep a close eye on the needs of each individual. Boarders enjoy their own Common Room, TV and games room along with the swimming pool, sports hall and other activities. Our boarders really make use of the space and opportunities available to them.





SERIOUS ABOUT
S P O R T

Helping children excel – sport for all.

Every child is so different, which is why there's a sport for every child at Walhampton.

We encourage children to find their sport, and then give them opportunities to excel in it. We're proud to offer such a huge range and variety, from sailing, archery, golf and fencing to traditional team sports like hockey, netball, rugby and football. Our outstanding facilities include a purpose-built sports hall, astroturf pitch, long jump runway, 400m track, football and rugby pitches, netball court, swimming pool and cricket nets.

Every child at Walhampton participates in daily sport and has numerous opportunities to represent the school.



*“Sports do not build character.
They reveal it.”*

HEYWOOD BROWN





In Sport as elsewhere, we are never elitist or exclusive: our watchwords are inclusiveness, diversity and excellence.

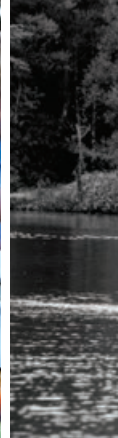
Whatever the activity, our approach is based on strong specialist coaching, team spirit, the benefits of competition and constantly improving your personal best.

Walhampton also welcomes visiting schools from across the region to compete in sporting fixtures. Our extensive grounds provide the perfect setting and facilities to host the Junior Wessex Athletics Championship and Perry Dalziel Cross-Country. Both events welcome over 600 children and their families to compete in track and field.

“Do you know what my favourite part of the game is? The opportunity to play.”

MIKE SINGLETARY





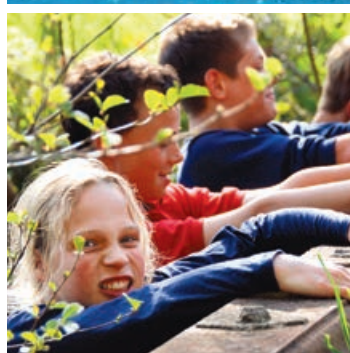
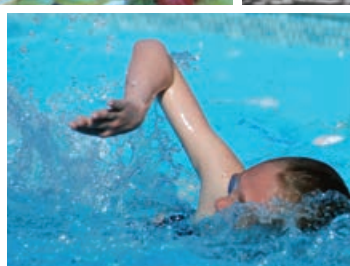
DEPTH AND BREATH

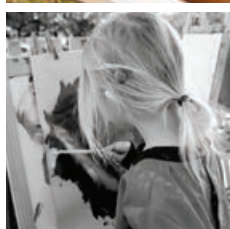
Every day brings new experiences.

We cater for every child, whatever their interests or yet-to-be-discovered passions.

Childhood is about discovering new things, and doing what you love. So we are extremely fortunate to have a site that enables us to provide over 60 extra-curricular activities:

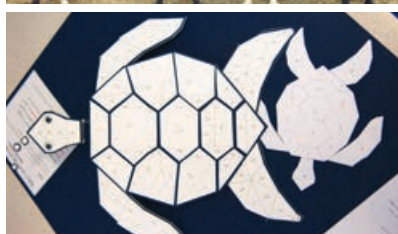
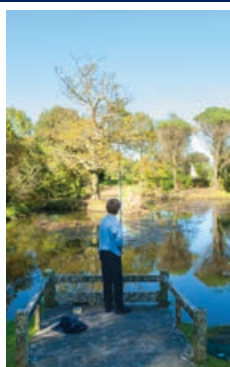
Horse riding, sailing, estate management, debating, shooting, gardening, model railway... the list goes on. 'Swallows and Amazons' is regularly relived on our sailing lakes. French cricket on the lawn, beekeeping in the woods, tree climbing or checking on the chickens that you reared since they hatched are all part of everyday life at Walhampton. We can help your child find their passion and combine learning new skills with personal development.





"The object of teaching a child is to enable him to get along without a teacher."

ELBERT HUBBARD





THE JOURNEY

MOVING ON

*We want our leavers to be confident,
capable and compassionate.*

Developing a well-rounded individual isn't easy. At Walhampton we set high expectations of manners, morals, effort, attitude and application: you would expect nothing less from us. But we also refuse to work in a top-down, prescriptive and pressurised way. By the time they leave, we hope that expectations and motivation will be driven by the children themselves. Our job is to support and guide them, as they develop their own maturity. So when the time comes to move to senior school, our Year 8 children are ready, both intellectually and emotionally.

Loyalty is a hallmark of our leavers and a testament to their days at Walhampton. Each year and across the generations, old boys and old girls come back to visit us and to briefly rejoin the Walhampton community at Christmas, Founders' Day, Bonfire Night and other events. On our side, we take great pride in hearing their news and keeping up with their achievements. We are always happy to welcome 'our children' back.

*"There are only two lasting bequests we can
hope to give to our children. One of these is
roots; the other, wings."*

HODDING CARTER





Walhampton

INDEPENDENT PREPARATORY SCHOOL

LET US ALL REJOICE IN OUR WORK

WALHAMPTON SCHOOL, LYMINGTON, HAMPSHIRE, SO41 5ZG

Telephone: +44 (0)1590 613300 Email: office@walhampton.com Web: www.walhampton.com

Head: Jonny Timms

Walhampton School Trust Ltd. Registered in England No. 871641. Registered Charity No. 307330

Designed by www.firebrandcreative.com