



Walhampton

IMPACT

Project 26 Update
Summer 2026



Intro from the Head

“

As we bring Project 26 to its conclusion, this is a moment to reflect on how far we have come and what has defined that journey. Launched in 2023, it has driven a period of purposeful growth and transformation at Walhampton. For this summer's leavers, whose Prep school journey began alongside my headship, its impact has been both formative and lasting.

Walhampton has always been values-driven. What defines us is how those values are lived: an education rooted in kindness, curiosity and achievement, expressed with a willingness to Think Wild. We are unapologetically ambitious for every child and clear in our purpose: to be a radically traditional educator, honouring traditional values while championing the individual.

This report captures more than a final year. It reflects a culture that listens and responds, builds independence and delivers across academic, pastoral and strategic life. The progress of the past 4 years gives us a strong foundation for what comes next. And as we look ahead, that spirit - values-led and boldly lived - will endure, shaping the next chapter of Walhampton's journey.

Jonny Timms

Jonny Timms
Head



Intro from the Chair

“

It is a real joy to read this Impact Report and to see the immense progress made over the course of Project 26. Even more importantly, we see that progress in action every day, and it is reflected clearly in our annual parent and pupil surveys. Your feedback and support matter enormously to us and are never taken for granted. We listen, and we continue to adapt and improve.

We have a strong foundation to build on, and we are genuinely excited about the next phase of this exceptional school.

Victoria Speers

Victoria Speers
Chair of Governors



Our Aims

To be a radical educator that honours traditional values and the individual child



Deliver a distinctive and outstanding education



Prioritise community wellbeing

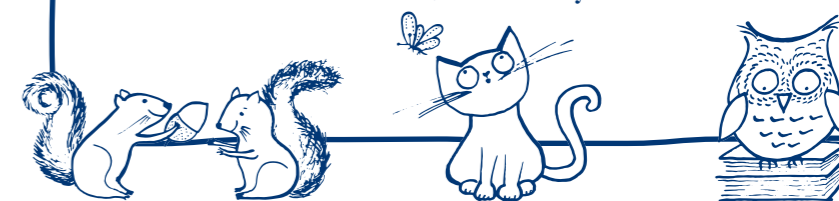


Lead our market



Nurture global contributors

Our Values: Kindness, Curiosity and Achievement



INNOVATION



Pillar 1

Deliver a distinctive and outstanding education



“

Leaders are ambitious for pupils' learning and achievement.”

ISI report

Ambitions remain high to ensure the educational provision at Walhampton is distinctive and outstanding. Fostering the development of the whole child, through an ambitious and well-rounded education, that provides support and challenge across all areas of school life.

TE TALK
EDUCATION
TOP 250



45

new Hordle House scholarships and exhibitions awarded to children in Years 6-8 with dedicated weekly enrichment sessions for each discipline.



Reimagined co-curricular programme following 3 main pillars and offering over 120 different sessions each week.



Whole school STEAM Fair with visiting planetarium and the launch of Bradfield Bear with the help of Southampton University.



Watch our co-curricular film here

Walhampton is now a Pony Club Centre.



CHALLENGE CORNER



Pink pen challenge embedded and embraced with a new fortnightly Challenge Corner Puzzle for the lunch queue.



Year 6 pupil Ami, won the Royal Geographical Society's 'Young Geographer of the Year' competition.

Walhampton Flight School established with British Young Pilots.



10



scholarship awards to 8 (33%) of our Year 8 leavers at 13+ (2026 leavers)

“

The staff are caring and supportive of each individual child and encourage them to be the best version of themselves.”

Parent feedback

PSPQ project established within the Year 8 Leavers' Programme in the style of a TedX talk.



Team of Year 5 pupils awarded second place in the maths team event at Sherborne School's Crack the Code competition.

Pillar 2 — Prioritise community wellbeing



“Children feel secure in their environment as a result of the caring relationships and positive attitudes modelled by staff.”

ISI report

Pastoral care and wellbeing are at the heart of everything we do, putting pupils central to every decision that is made. We recognise the magic triangle between pupil, school and home, and we work as a team to ensure each child develops confidence, resilience and self-awareness.



Library open at break time for reading, chess and puzzles.

“The culture and ethos of the school is perfect.”
Parent feedback



Regular events for parents to attend including Owl Corner Tea, Morning Mile, Lake Run, Head's Suppers and Friday Chapel.



Typically engaging with parents, staff and pupils, visiting speakers ensure key messages are shared consistently and communicated in an age-appropriate and relevant way to each group.



94% of parents said their child was happy at Walhampton in our 2025 parent survey.



Walhampton Singers, our parent and community choir, performed at Founders' Day and the Carol Service.

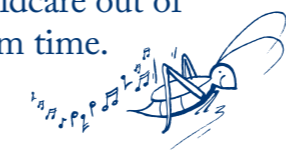


Senior pupils are able to influence their choice of tutor and usually retain them for two years.



Belonging curriculum embedded into tutor and form time.

Funseekers holiday camp from the age of two, to support childcare out of term time.

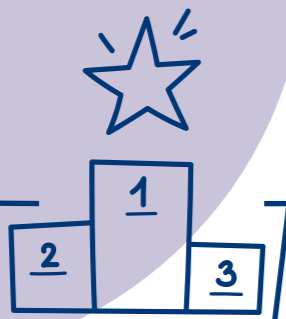


All Year 8 pupils are given a leadership role to support specific areas of the school, providing valuable opportunities to develop responsibility and confidence.

Wired 4 Wellness continues to be a conversation that matters. Read our Pastoral Booklet here.



Pillar 3 Lead our market



347 Pupils 131 Pre-Prep 216 Prep
 55% Boys 45% Girls 242 Families
 24 Full boarders 6 Weekly boarders 25 Trialled boarding taster night



Assistant Head
Co-Curricular
appointment to
drive forward the
re-imagined
programme.



Bath Rugby host
residential training
camp as we continue
to diversify our
commercial
income stream.

“*He said it is ‘the best school in the world’ and we are completely convinced that this is the right place for him to join.*”

Prospective parent feedback

Sibling fee discount
introduced as we
seek to minimise
the impact of fee
increases to parents.



My School
Portal introduced
and embedded
as a dedicated
parent portal.



Nursery entry point
increased to half-
termly to welcome
children closer to
their 2nd birthday.



In what is a hugely challenging market for the independent education sector we focus on delivering an education that families desire, children immerse themselves in and staff feel supported to thrive. We strive to attract local families as well as those from further afield and seek to stand out from the competition.



Prep taster and
Pre-Prep explore
mornings introduced
in addition to
open mornings.

Best Prep School
finalist in Tatler
School Awards 2026



Flexi boarding
packages to support
co-curricular
programme and
boarders now
able to stay for
exeat weekends.



New joiners to
every year group
from Nursery
to Year 8 this
academic year.



Our NPS score
for ‘likelihood
to recommend
Walhampton’ rose to 56
(up from 31 in 2024),
reflecting increased
parent confidence
and advocacy.



Pupils represent
11 nationalities

“*Being new at the school was a huge step for our children. Walhampton has been fantastic in supporting this positively.*”

Parent feedback

Golf performance
programme
introduced.



Pillar 4 — Nurture global contributors



Chapel Choir have visited residential homes to sing to the elderly and performed to audiences in Paris.



“Thank you for hosting the Perry Dalziell cross country, another inspiring afternoon. Events like these make a huge difference to pupils’ sporting experiences.”
Visiting Director of Sport

WPA fundraising for Naomi House & Jacksplace concluded with a total of £32,000 raised over a 3 year period.

Cavell House delivered handmade Christmas cards to Lymington Hospital staff.

“Pupils develop a deep sense of empathy and acceptance for others.”
ISI report

We want Walhampton pupils to become curious, kind and outward-looking young people, ready not just for senior school, but for life beyond it. Walhamptonians are creative, resilient, problem solvers who are ready for life in the changing world of tomorrow. Visibility beyond the Walhampton gates is crucial. Social responsibility and humility is key as we continue to nurture global contributors with a sense of purpose and community.

Harvest collection for New Forest Basics Bank.



140 jobs supported by Walhampton and a £2.5m per annum* saving generated to UK tax payer by pupils not taking up places in the maintained sector.
*ISC data

Walhampton sponsorship of the Royal Lymington Yacht Club Youth Week and equine classes at the New Forest Show.



Pupil led enterprise stalls at Christmas Fair raising funds for the WPA.



Second Walhampton Triathlon held in September 2025 with over 200 participants including 61 children from the wider community.



Joint choral concert with Canford School raising funds for the Walhampton School Foundation Trust with parent, alumni and community guests.



New WPA charity chosen by the children - Helpful Hounds.



Local Primary School Headteachers welcomed to a Walhampton coffee morning to explore partnership opportunities.



Walhampton recognised for 60 years commitment to the National Gardens Scheme charity with over £5,000 raised since 2023.

“It was a delightful afternoon of netball and the teams were perfectly matched. Very many thanks to Walhampton who have been wonderful hosts to us this term.”
Milford Primary School



New 2026 Benefactor initiative for the Walhampton School Foundation Trust.



“

What we value most about the school is the welcoming environment – both the beautiful grounds and the wide range of opportunities available. The staff are genuinely friendly and supportive, creating a space where our children feel safe and encouraged. I really appreciate that the school nurtures personal development. Our hope is that in this kind of environment, our children continue to grow into kind, passionate, and ambitious people.”

Parent feedback



Walhampton

WALHAMPTON SCHOOL, LYMINGTON, HAMPSHIRE, S041 5ZG

Telephone: +44 (0)1590 613300 Email: office@walhampton.com Web: www.walhampton.com

Head: Jonny Timms MA (Hons), QTS, M.Ed.

Walhampton School Trust Ltd. Registered in England No. 871641. Registered Charity No. 307330