

NURTURING BUSY MINDS

warm family atmosphere

active curiosity



nurturing

A SPECIAL PLACE

happy

unique



remarkable setting

idyllic

SUPPORTIVE



big hearted



Walhampton



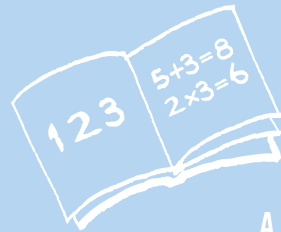
space to learn

unique

NURTURING BUSY MINDS

individual to each child

independent thinkers



forest school

ALWAYS LEARNING

INSPIRED TEACHING

welcoming





"We must teach our children
To smell the Earth
To taste the rain
To touch the wind
To see things grow
To hear the sun rise and night fall
To care."

JOHN CLEAL



A place as unique as your child...

Walhampton Pre-Prep is a remarkable setting for your child's educational journey to begin. Welcoming young children aged two to seven years and set within one hundred acres of stunning grounds, our purpose built, beautifully enhanced Pre-Prep is just a short walk from the Prep school. Parents will find a happy, warm and big-hearted place where we help boys and girls to develop the building blocks for a lifelong love of learning.

The close and strong partnership between home and school mean that parents are involved at each and every stage of school life and together we get it right for your child. Our excellent Walhampton staff are as experienced as they are caring; guiding and nurturing all of our children to be the very best that they can be. We support them as they build confidence and develop those essential social skills. We are passionate about helping children to develop the characteristics of effective learning; playing and exploring in and around our magical environment enables children to become creative, critical thinkers and active, engaged learners. Walhampton is quite simply a very special place for children to love, learn and grow.

We would be thrilled to be part of your child's educational journey and can think of no better place for that adventure to begin. You can be assured that at Walhampton, every day is a special day.

Claire Holly, Head of Pre-Prep

At Walhampton we aim to:

- Be a distinctly happy place where children can laugh, feel safe and enjoy being children
-
- Develop each child's unique personal, academic, creative and sporting potential
-
- Inspire a love of nature and the great outdoors
-
- Be recognised for inspirational teaching and as a place where children can begin to develop the absolute joy of learning
-
- Promote a core set of moral, spiritual and social values for life inspired by our school's Christian ethos
-
- Develop strength of character so every child leaves us as a confident, capable, compassionate, resilient and independent-minded young person





Nursery

Laying the foundations for growth and learning

Our Nursery is a warm, happy and nurturing environment – and our door is always open so parents can share ideas, ask questions and help ensure their children feel safe and happy. Our Nursery approach covers all areas of child development... social, creative and physical. These areas are developed through purposeful play, both inside and out, as the children embark upon the Early Years Foundation Stage (EYFS) curriculum.



Qualified staff spark the children's imagination, creating a place where inquisitive minds can play, learn and explore creatively. This is the gentlest way to start their learning. An excellent adult-to-child ratio also demonstrates our commitment to maintaining the highest standards, with qualified Early Years teachers meeting your child's personal and pastoral needs. Nursery age children are also taught music by a specialist teacher.

What you need to know

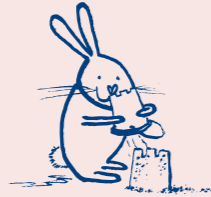
Your child can start the term after their second birthday. A carefully considered process helps to ease the transition from home to school. In partnership with parents, we support each child as they settle into the nursery routine and environment. We offer flexible timings to suit the needs of your child and the family. Children are welcomed in to Nursery from 8am. They then stay for a morning session until 11.45am, enjoy a healthy homemade lunch and be ready to leave at 1pm, or they can stay for the whole day until 3.30pm.

- ✓ Trained and qualified Nursery staff
- ✓ A warm, welcoming and nurturing environment
- ✓ Children can start from two years of age
- ✓ Flexible timings from 8am to 3.30pm
- ✓ Healthy homemade snacks and lunch
- ✓ Wraparound care



"Tell me and I forget. Teach me and I remember. Involve me and I learn."

BENJAMIN FRANKLIN



Kindergarten

Encouraging independence and helping every child thrive

With small numbers of children aged three to four years old and dedicated staff, Walhampton's Kindergarten focuses on providing a 'learning through play' environment to continue developing each child's individual interests and abilities. A wealth of opportunities and experiences, in the classroom and outdoors, allow the children to flourish. We make regular visits to Walhampton's Forest School, the gym, cookery kitchen, music rooms and library.

Kindergarten builds on the traditional values that feature across our Early Years department, ensuring continuity, while we also encourage every child to start making choices about their own learning. High adult-to-child ratios mean we can promote high standards and behaviour including: manners, kindness and the importance of children developing their own individual 'voice'.



What you need to know

Building upon the learning that has taken place in Nursery, we continue to support each child whilst taking into account their age and stage of development, depth of understanding, previous experiences and their achievements. We are very flexible with timings and your child can attend for session times that best suit them and your family.

- ✓ Experienced and well qualified teaching staff
- ✓ Learning through hands-on experience and play – how young children learn best
- ✓ Regular trips and guest visitors
- ✓ Wraparound care
- ✓ Growing and encouraging independence
- ✓ After School Club
- ✓ Specialist music and PE teachers for lessons each week
- ✓ Early Years Foundation Stage (EYFS) Funding



"All I really need to know... I learned in kindergarten."

ROBERT FULGHUM



Reception

More structured learning: exploring the world while learning through play

Reception continues to build on the Early Years Foundation Stage curriculum, extending skills, knowledge and understanding. Teachers balance constant encouragement with higher expectations in terms of a child's application and achievement. Children work towards and beyond the Early Learning Goals, exploring mathematics, reading, writing and other areas of the curriculum.

Reception is hands-on, purposeful and organised to help each child progress. Activities new to the children include one-to-one reading, daily phonics lessons, taking reading books home each day, and the recording of maths and literacy work. Interactive whiteboards and iPads add to the engaging and immersive learning experience.

Children spend half a day every week at Forest School doing a wide range of activities, including den building, fire lighting, exploration and discovery. More importantly, Forest School provides the perfect environment to develop and apply the key characteristics of learning – resilience, risk-taking, initiative, curiosity, originality and empathy. Our Think of the Week promotes deeper thinking, as part of our commitment to Philosophy for Children throughout the Pre-Prep and into the Prep school.

What you need to know

Your child attends full-time and wears the school's uniform for the first time: many are excited by this visible progression to 'big' school. In addition to both classroom and outdoor learning, each class also has a weekly cookery lesson, music and PE with specialist teachers. In the summer term a weekly swimming lesson adds to the excitement.



- ✓ Small class sizes and full-time teaching assistants in each class, give children the attention they require
- ✓ Learning to read and write – reading with an adult every day
- ✓ Engaging mathematical experiences
- ✓ Learning to play and work as a team
- ✓ Dedicated and purposeful, all weather outdoor area
- ✓ Wraparound care
- ✓ Specialist teachers for music and PE



“Life is a series of experiences, each one of which makes us bigger.”

HENRY FORD



Year One

A broader and deeper curriculum to promote problem-solving and independent thinking

In Year 1, children move from the Early Years Foundation Stage to the National Curriculum. This transition is managed with great care as we dove-tail the end of Reception with the beginning of Year 1.

This is a year to take on new responsibilities and gain a greater awareness of each other and the world around us. Creative teaching with a topic-based approach, stimulates children with new ideas and fosters a sense of purpose. At the same time, structured play and role-playing reinforces the academic goals and ideas being explored in lessons.

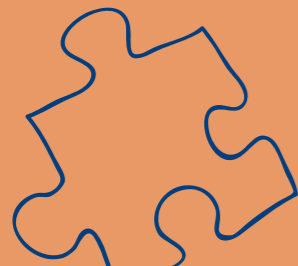
Literacy and numeracy, as the nuts and bolts of the curriculum, are focused upon each day. The children are introduced to a greater number of independent writing tasks, whilst developing a beautiful cursive script. Activities are differentiated to enable each child to develop at their own pace. Cross-curricular learning takes place in science, geography, history, art, computing and RS. Regular assemblies support the traditional values that underpin our school, while encouraging children's confidence through public speaking.



What you need to know

As part of our creative approach to teaching and commitment to academic achievement we continue to take learning outside the classroom, making use of our extensive grounds and facilities. This includes weekly Forest School. Year 1 children can also attend horse riding, French and music lessons and use our sports hall and playing fields for PE and games. After school activities provide an exciting extension to the school day.

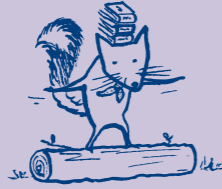
- ✓ Daily literacy and numeracy lessons
- ✓ Topic-based science, geography, history and RS
- ✓ Music, computing, art, games and PE every week
- ✓ Weekly assemblies
- ✓ After School Club
- ✓ Wraparound care
- ✓ A wide choice of activity clubs



"I am still learning."

MICHELANGELO





Year Two

Consolidating skills, taking a questioning approach
and preparing for the future

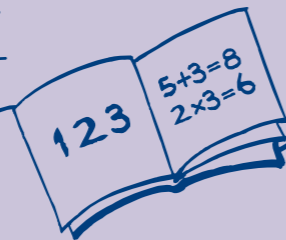
In Year 2 the children are more aware of their abilities and increasingly proud of academic achievements. We start to gently introduce learning strategies, such as memory maps, which the children can build on as they continue through school. This includes helping individuals to become more confident and independently minded throughout their learning, general behaviour and friendship circles. We also promote greater independence and organisational skills, particularly in the morning and end-of-day routines.

Numeracy is taught with an emphasis on practical activities and the developing of number skills using the four basic operations. Year 2 literacy incorporates a range of genres to promote creative thinking, writing skills and imagination. Science, geography and history continue to be taught through a topic-based approach that promotes investigative skills and self-motivated learning. RS introduces an awareness of different faiths and has discussion-based lessons, while French, music and timetabled visits to Forest School continue. This teaching and learning is complemented by visits to local sites of interest and special guests coming in to school.

What you need to know

With strong foundations in place, Year 2 is the time to further stretch the children academically, with an even broader integrated curriculum, whilst continuing to ensure that learning is tailored to meet the needs of each individual child. As well as core numeracy, literacy and topic-based subjects, this includes specialist games, art and music teaching, regular visits to the kitchen garden, and sports includes optional horse riding, tag rugby, football, tennis, hockey, cricket, swimming, gymnastics and dance. A carefully managed transition to Year 3 and Key Stage 2 begins with Prep school teachers teaching weekly lessons in arts, computing and games. Later in the year the children attend a carefully managed programme of taster sessions and spend time with their new teachers in the Prep department.

- ✓ Encouraging creative thinking, self-evaluation and challenging questions
- ✓ Daily practice: cursive handwriting, times tables, individual reading
- ✓ Specialist teaching including PE, art and individual music lessons
- ✓ Weekly chapel assemblies continue
- ✓ Competitive sport gently introduced
- ✓ Wraparound care



“Some days we can be scientists
and explorers, on other days
we are storytellers.”

ANNABEL, YEAR 2





Forest school

A stimulating woodland setting for children to grow,
explore and develop a love of nature

Forest School and outdoor learning inspires our children to be more creative. They develop resilience, perseverance and determination to succeed as they work. These values are then transferred to the classroom and directly support their literacy, numeracy and other academic development.

We are fortunate that every classroom in Pre-Prep has easy access to the outdoors. This means that every child has opportunities to go outside, work within a team and be closer to the natural world. All our classes make the most of our stunning one hundred acre grounds, which include a specialist Forest School site, outdoor classroom and kitchen garden.

Whether it's creative cookery in a mud kitchen or planting, tending and harvesting in the kitchen garden, the opportunities for learning outdoors are endless. Whatever the weather, outdoor learning builds confidence and self-esteem, and offers close-up experiences of nature, life cycles and wildlife. Children develop practical skills, improve their communication and understand teamwork by constructing shelters, working with tools and building fires. These activities take place in a totally safe and controlled environment where they can start to assess and take risks for themselves.



What you need to know

In addition to other opportunities for outdoor learning, visits to our Forest School are timetabled weekly for Reception to Year 2, with the children spending half a day in the woods. By exploring nature and working together – climbing, collecting, shelter-building, cooking, fire lighting and more – the children have opportunities to make independent choices, to initiate their own learning and time to sit and reflect.



- ✓ All Pre-Prep children enjoy Forest School and outdoor learning every week
- ✓ Underpins and extends the academic curriculum
- ✓ Deeper learning through hands-on exploration
- ✓ Promotes confidence, independence and raises self-esteem
- ✓ Waterproofs provided



'As soon as he saw the big boots, Pooh knew
that an adventure was going to happen'

WINNIE THE POOH, A.A. MILNE



Activities & hobbies

Broadening horizons through new experiences,
challenges and opportunities to shine

Our extensive school grounds, excellent facilities and experienced staff mean your child can take part in a wide range of activities both during and after their school day. In addition to the many activities that are timetabled as part of the curriculum, a wide range of after school activities further enhance and enrich their time at school.

Your child's school adventure can involve everything from cookery to crazy science, board games to book club, rugby to rhythmic gymnastics, pony riding to piano lessons, Lego construction to LAMDA, and much more. These activities are a natural extension of the academic experience at Walhampton.

We enjoy taking the children out and about, using our own school minibuses to explore places of interest. Our setting on the edge of the New Forest means we have wonderful opportunities for off-site learning, from museum and farm visits to pond dipping and beachcombing. These trips, plus the interesting visitors that come to the school, bring an extra dimension and depth to classroom learning.

After School Care

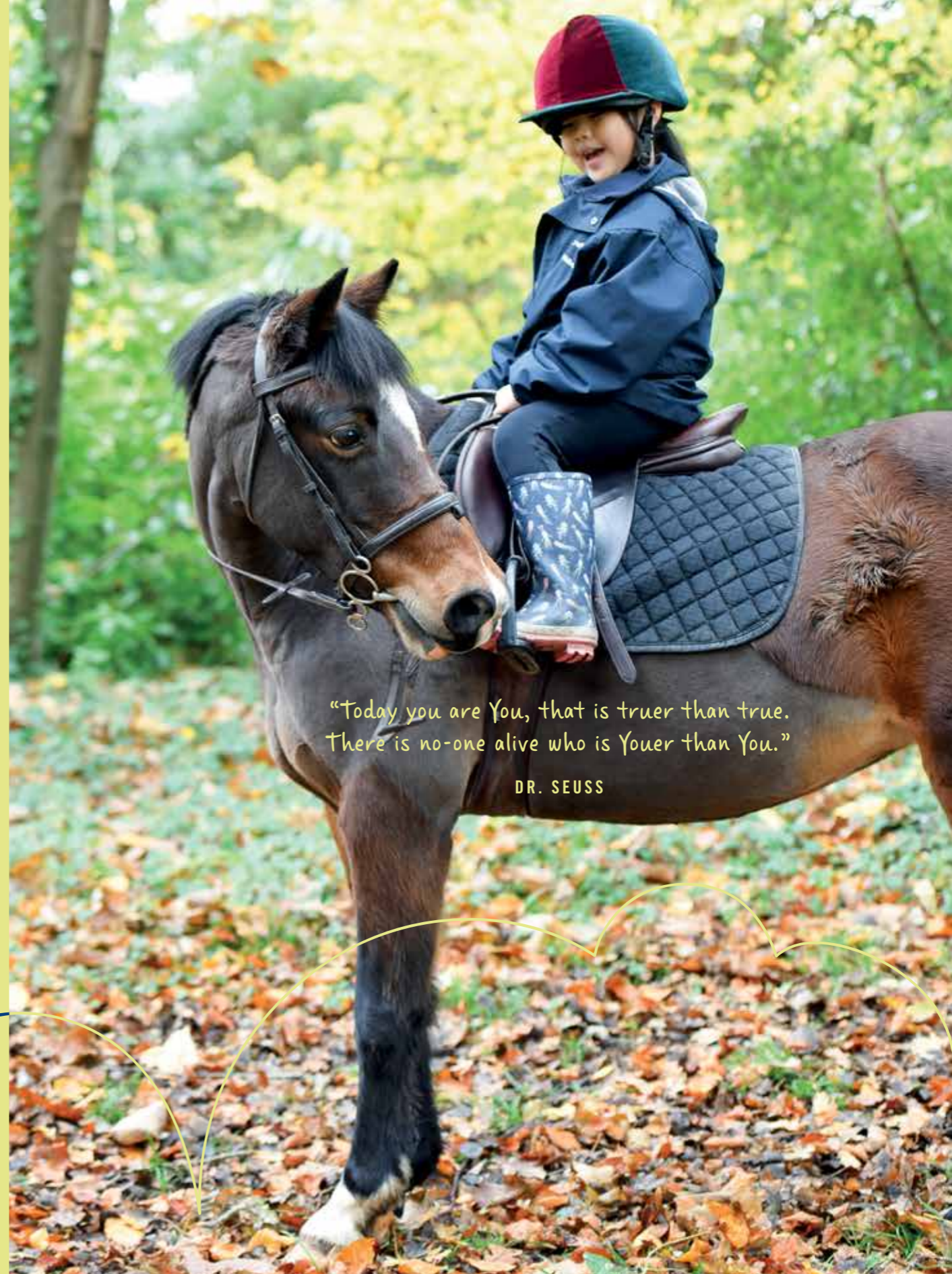
Our After School Club runs at the end of every day. Many parents find this invaluable and it is a wonderful way for children to end the day. In a calm environment, the children enjoy some down time at the end of a busy day with traditional toys, books to share, crafting and construction.

Wraparound Care

Wraparound Care enables you to extend the day further with an optional Breakfast and Supper Club and means that your child can be supervised at Walhampton, should you wish, from 7.30am until 6pm.



- ✓ Helping each child to develop as a rounded individual
- ✓ A wealth of specialist staff and on-site facilities for sports, music, drama and hobbies
- ✓ The choice of activities grows alongside the children
- ✓ Guest visitors include musicians, theatre companies, science shows and wildlife displays
- ✓ One-to-one support to inspire each child to find a pursuit or hobby they love
- ✓ Wraparound care provides a calm extension to the start and end of the day



*"Today you are You, that is truer than true.
There is no-one alive who is Youer than You."*

DR. SEUSS



Healthy food

Providing the best fuel for active children with enquiring minds

We are parents ourselves, so we understand the importance of good food, freshly prepared, then shared as a school family. This is even more important in the early years, when children are open to new experiences and can start developing good habits. This ethos underpins our Walhampton kitchen, where our chef creates special Pre-Prep meal plans and cooks tasty, homemade, nutritionally balanced meals every day.



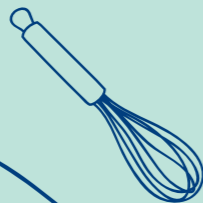
We always work closely with parents to understand a child's needs when it comes to food, and take into account any special dietary requirements.

We also make time for healthy snacks during the day, from Nursery right up to Year 2: fresh fruit, vegetables and wholesome products, with reduced sugar and slow release energy, help ensure the children get the nutrients they need to focus and sustain concentration for longer.

What you need to know

We offer a mixture of child-friendly food, including options to 'try something new' while eating together alongside teachers in a shared experience. This is an excellent opportunity to hone table skills and good manners.

- ✓ Tasty homemade meals prepared using fresh ingredients
- ✓ Nutritionally balanced
- ✓ Listening to parents and children – accounting for special diets
- ✓ Opportunities to experience new foods and tastes
- ✓ Eating together for good manners and social skills



“Tell me what you eat, and I will tell you who you are.”

JEAN ANTHELME BRILLAT-SAVARIN



Any questions?

Working in partnership with parents, our door is always open

Our open-door policy means we are delighted to talk with parents at any time and always work hard to keep you informed of your child's progress. In fact, we encourage parents to be involved at every stage of their child's education, believing a positive dialogue between home and school can only benefit your child.

You can learn more about the Early Years Foundation Stage and Key Stage 1 at our curriculum evening in September. We hold regular parent consultation evenings.

“

How do you cater for the individual needs of each child?

Small class sizes enable us to know exactly where each child is at in their learning journey. We are therefore able to differentiate and plan accordingly to help them to take their appropriate next step.

How can I tell if my child is ready to start at Walhampton?

Every child is different, as are the needs of each family. We can work this out together to get it right for your child and your family.

Do you provide learning support?

We aim to meet the needs of all of the children in our care. Whilst support for some needs is provided in class by the teacher, should your child require additional support, the teacher will liaise with the Pre-Prep SENDCo. If necessary, an individual learning programme will be developed which will target the needs of the child. LSU lessons are provided at an additional cost.

How big are your class sizes?

We are committed to small classes and superb adult to child ratios. Across Key Stage 1 each class of 17 children has a teacher and a full time teaching assistant. Our Kindergarten and Reception classes follow a 1:8 ratio and in the Nursery, with our youngest children, we follow a ratio of one adult to every four children.

How do you manage the transitions between each Year group?

We look upon transition as a carefully managed process to ensure that each next step is a hop skip and a jump for both children and parents.

Are you part of the Early Years Foundation Stage funding scheme?

Yes we are and this can be accessed from the term after your child's 3rd birthday. Full details are available from the Bursary.

Is there a uniform?

All children will need a waterproof coat and wellington boots. In Nursery and Kindergarten there is an optional Walhampton tracksuit. From the Reception year onwards children wear the full school uniform.

How do you promote good behaviour?

We implement a positive behaviour management policy with Golden Rules for home and school.

”



Starting out

Walhampton's Pre-Prep is a very special place

Walhampton subscribes to the truism that 'school days are the best of our lives' and as such we are unapologetic in our quest to learn whilst having the best possible time doing it!

Learning is so much more alluring, fruitful and fun if one is encouraged to explore, investigate and discover. There are few schools which can offer a setting quite like Walhampton's: one hundred acres of woodland, lawns, and lakes with views across the Solent to the hills of the Isle of Wight.

It is the perfect place to celebrate the joys of childhood.

Our staff consider it a privilege to care for children in their precious early years, as they begin their educational journey. As such, we are blessed with a superb team of inspirational teachers who go the extra mile for each and every child. We place importance on strong communication, open dialogue and a close relationship between teacher, parent and child.

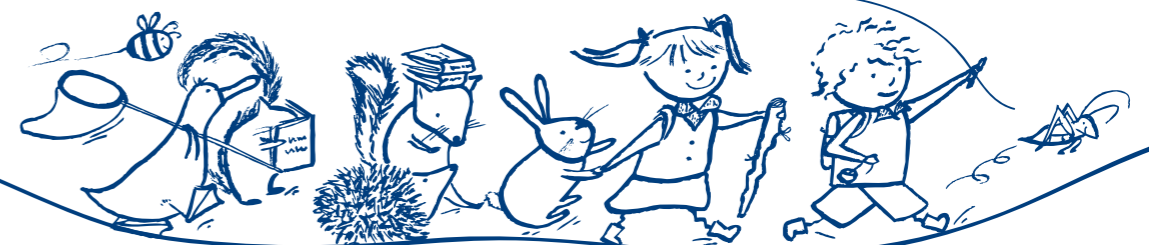
Our door is always open at Walhampton. Partnership is considered essential.

We encourage a spirit of enquiry, curiosity and independence, fostering determination and resilience.

These qualities, coupled with an awareness of the world around them, consideration for others and, above all, kindness help to make Walhampton Pre-Prep very special indeed.

Do come and visit. We would love to welcome you here.

Jonny Timms, Head





welcoming

INSPIRED TEACHING

supportive

FOREST SCHOOL

warm family

inspiring big atmosphere



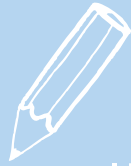
hearted



idyllic

NURTURING BUSY MINDS

FREEDOM TO PLAY



unique

INDIVIDUAL TO EACH CHILD



independent thinkers

amazing
opportunities



happy

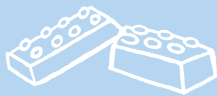


caring

ENCOURAGING



always
learning



active curiosity

Walhampton

Independent Pre-Prep school, ages 2-7. Lymington, Hampshire SO41 5ZG.
Please contact 01590 613 303 or email registrar@walhampton.com